

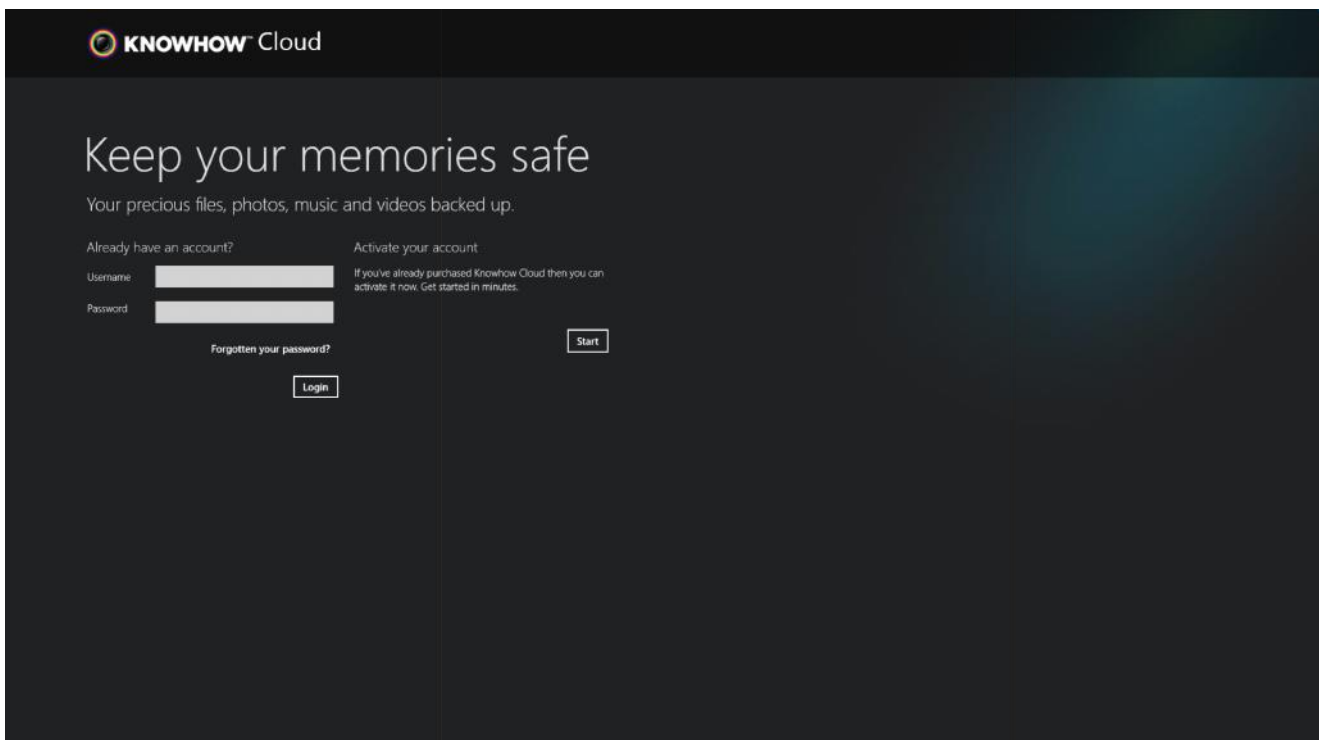
KNOWHOW CLOUD

WINDOWS 8 MODERN APP v2.1

1.1 NEW INTERFACE

1.1.1 LOGIN

Beginning with the login screen, every aspect of the app has been redesigned to provide a more intuitive and cleaner experience on Windows 8.x tablets and PCs.

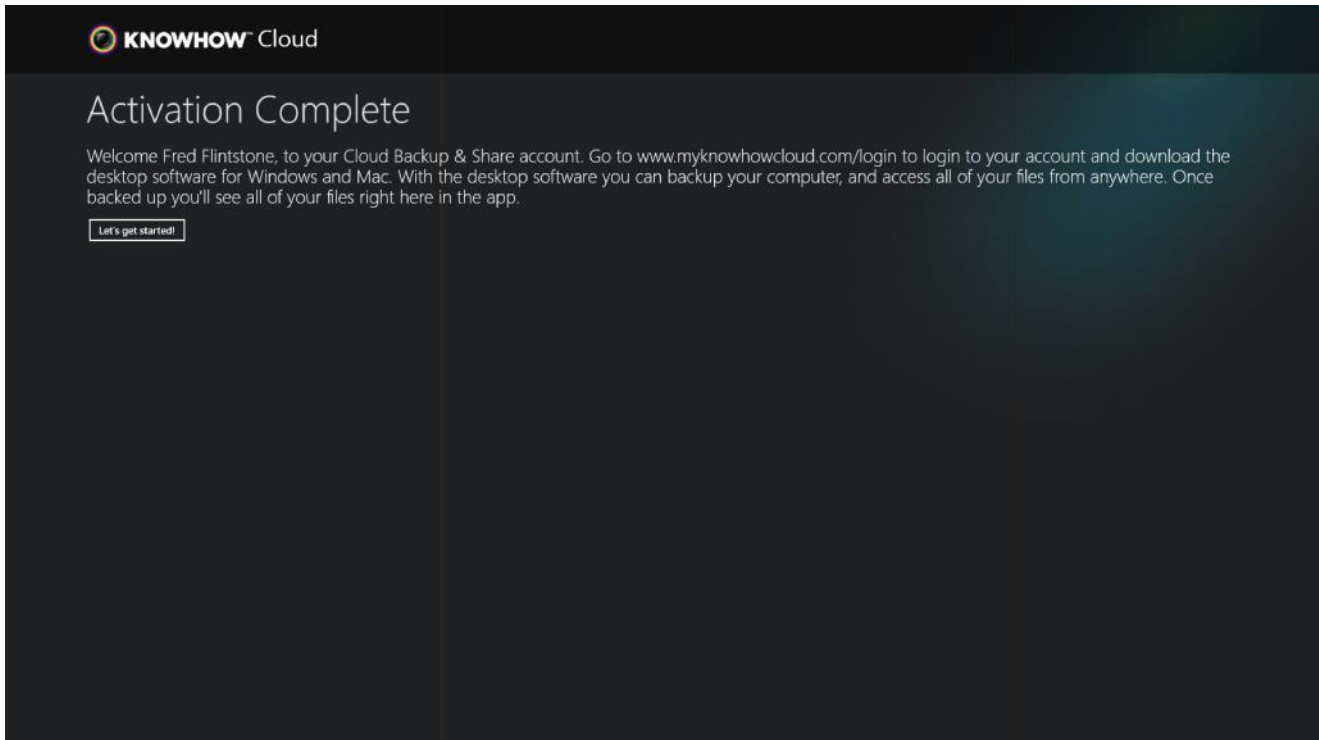


From this point on the client will automatically login in every time it is opened unless the user logs out from the main menu. The app has a new password reset function that sends an email with a password reset link.

On first run, the application asks permission to run in the background (to enable Live Tile operation).

1.1.2 ACTIVATION

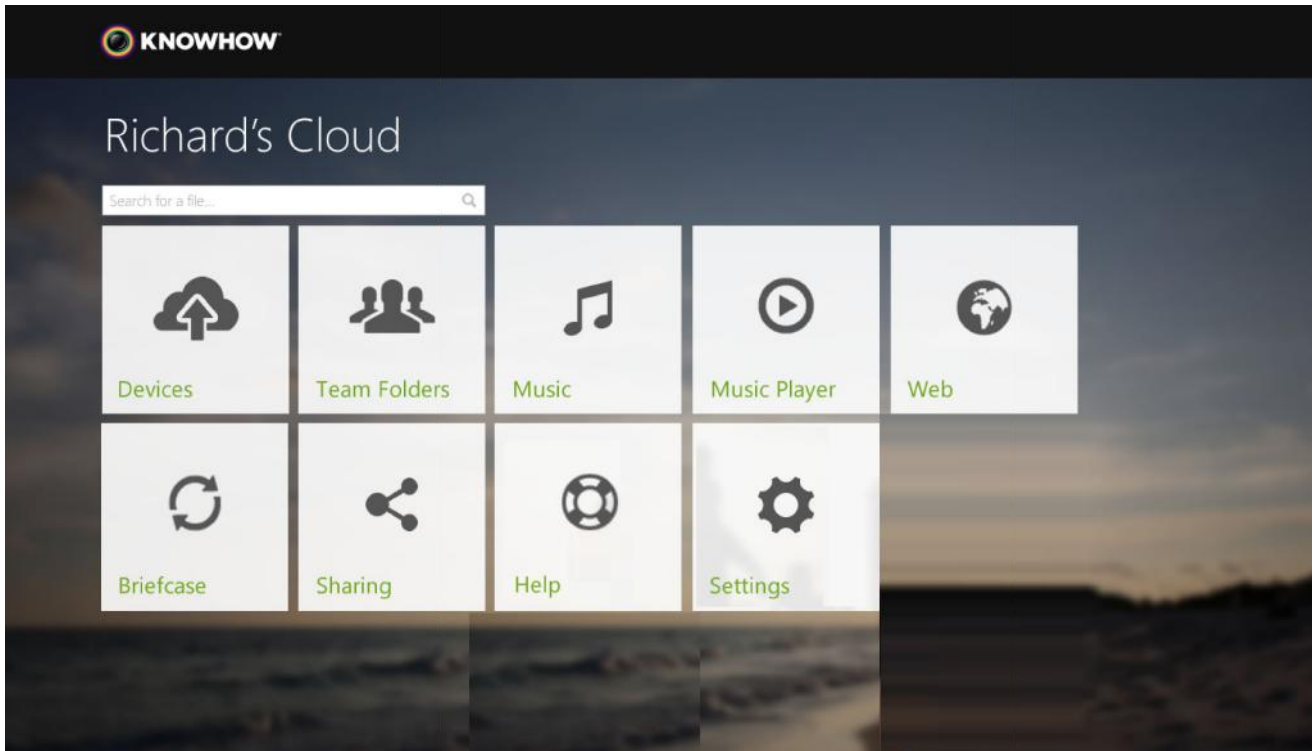
The “Start” button on the login screen opens the standard activation pages in an embedded web page. After activation, the app picks up the newly created account automatically and logs in.



The “Let’s Get Started” button takes you to the main menu (see section xxxx)

1.2 MAIN MENU

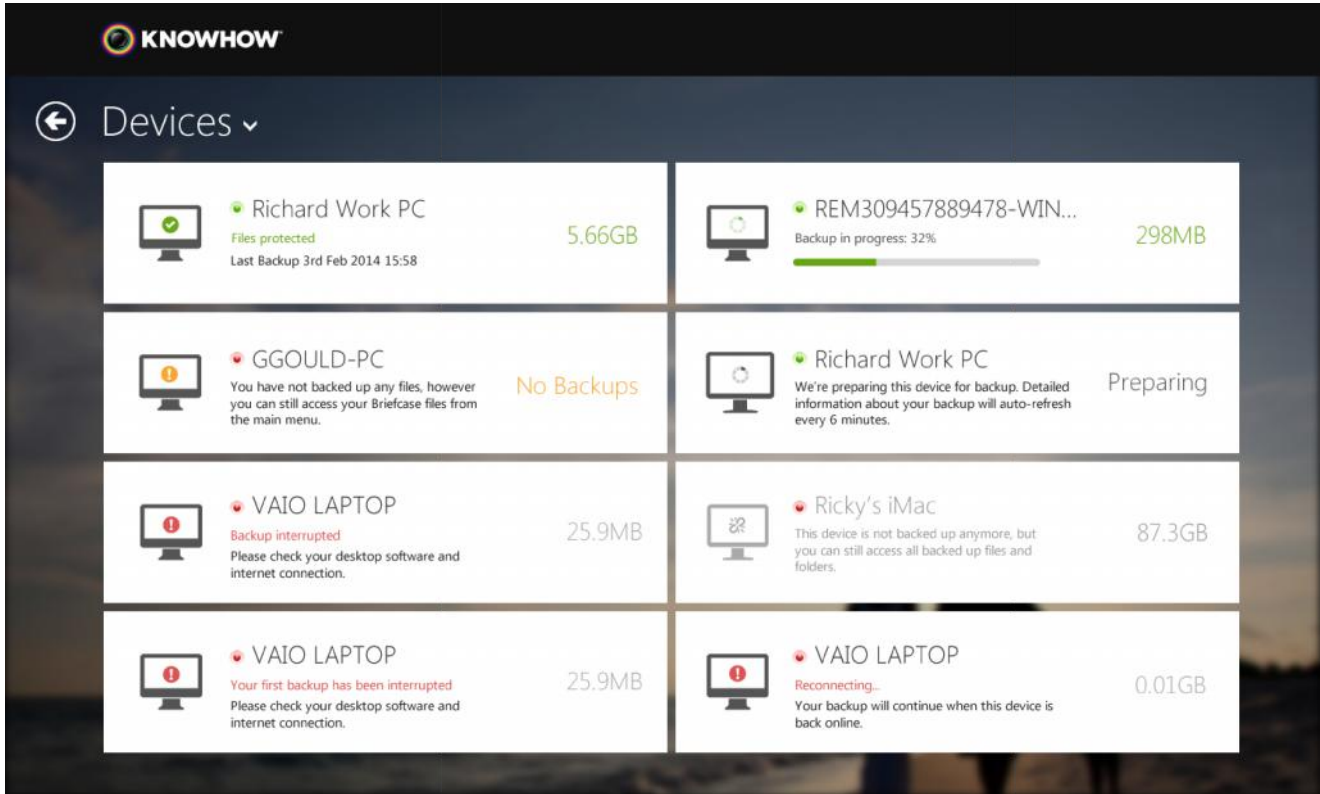
After login the user is presented with the main menu.



Search box	Searches app for file / folder	See section xxx
Devices	Opens a list of devices that are connected to the account	Section 1.2.1
Briefcase	Opens the Briefcase	Section 1.2.3
Team Folders	Opens the Team Folder list (business accounts only)	
Sharing	Opens a list of people sharing files with the user	
Music	Opens the Music list	
Music Player	Opens the Music Player	
Help	Opens help pages in a Web Browser	
Web	Opens the user's portal in a Web Browser	
Settings	Opens the Settings	

1.2.1 DEVICE LIST

Selecting Devices from the main menu will bring up the device list.

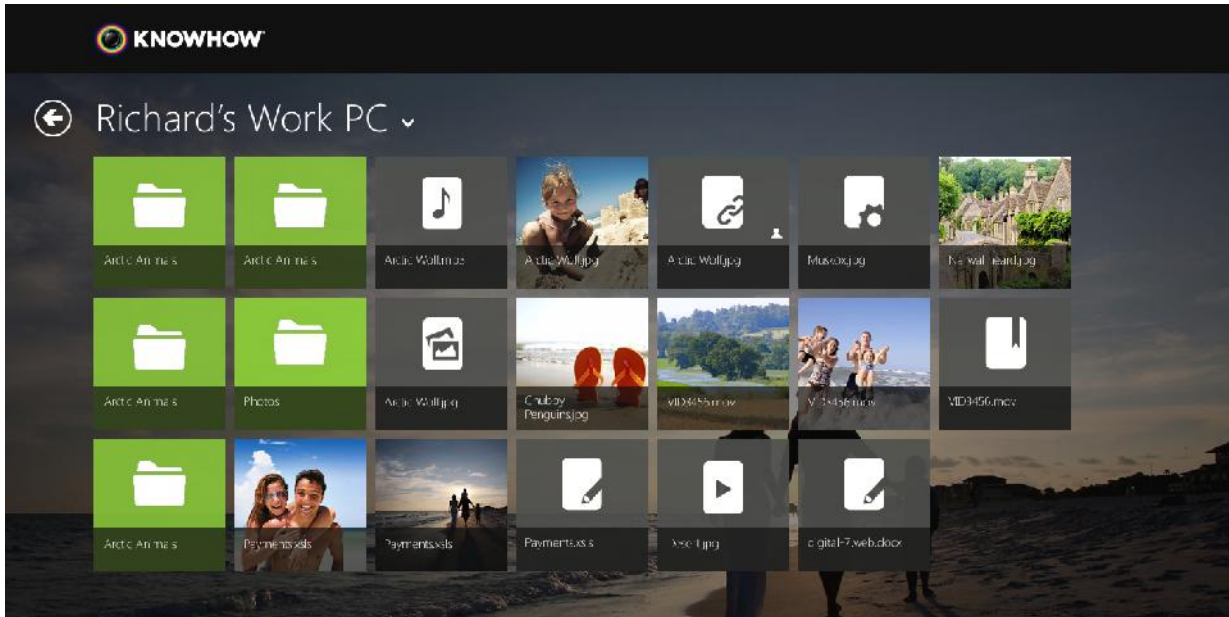


The information presented here mirrors that shown in the user's portal.

From the App Bar, the user will be able to remove (or unlink) devices and backups.

1.2.2 FILE BROWSER - BACKUP

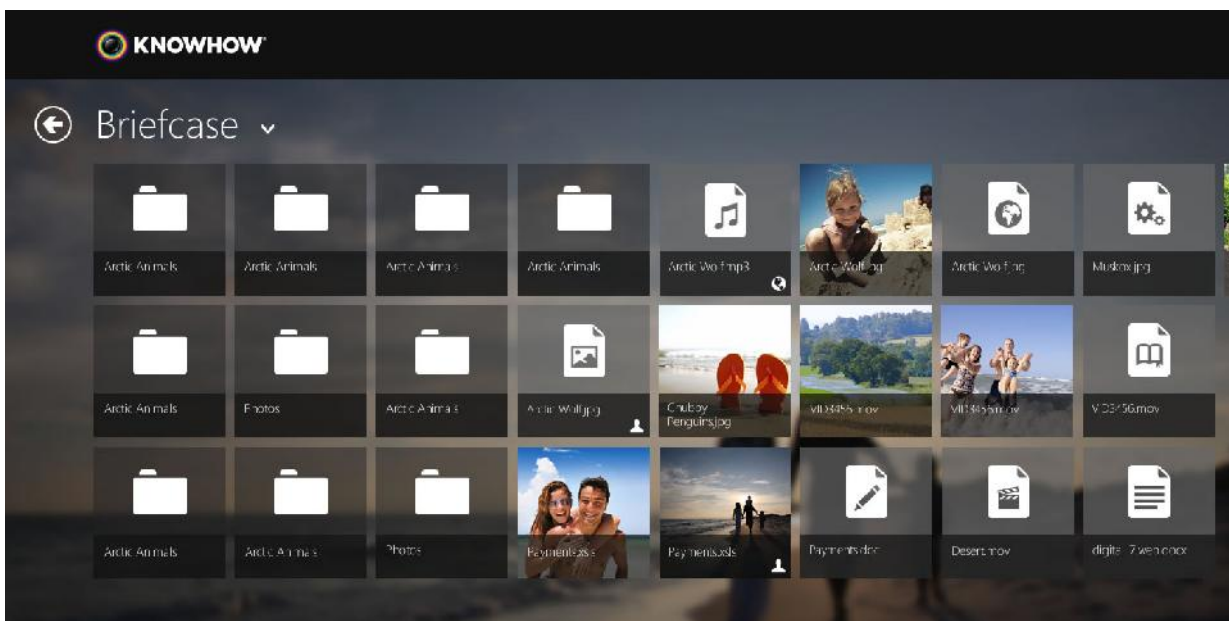
Selecting a device allows you to browse the files in the backup.



The App Bar (swipe up from the bottom of the screen) allows the user to download files and previous versions, view a slideshow, or add to playlist.

1.2.3 FILE BROWSER - BRIEFCASE

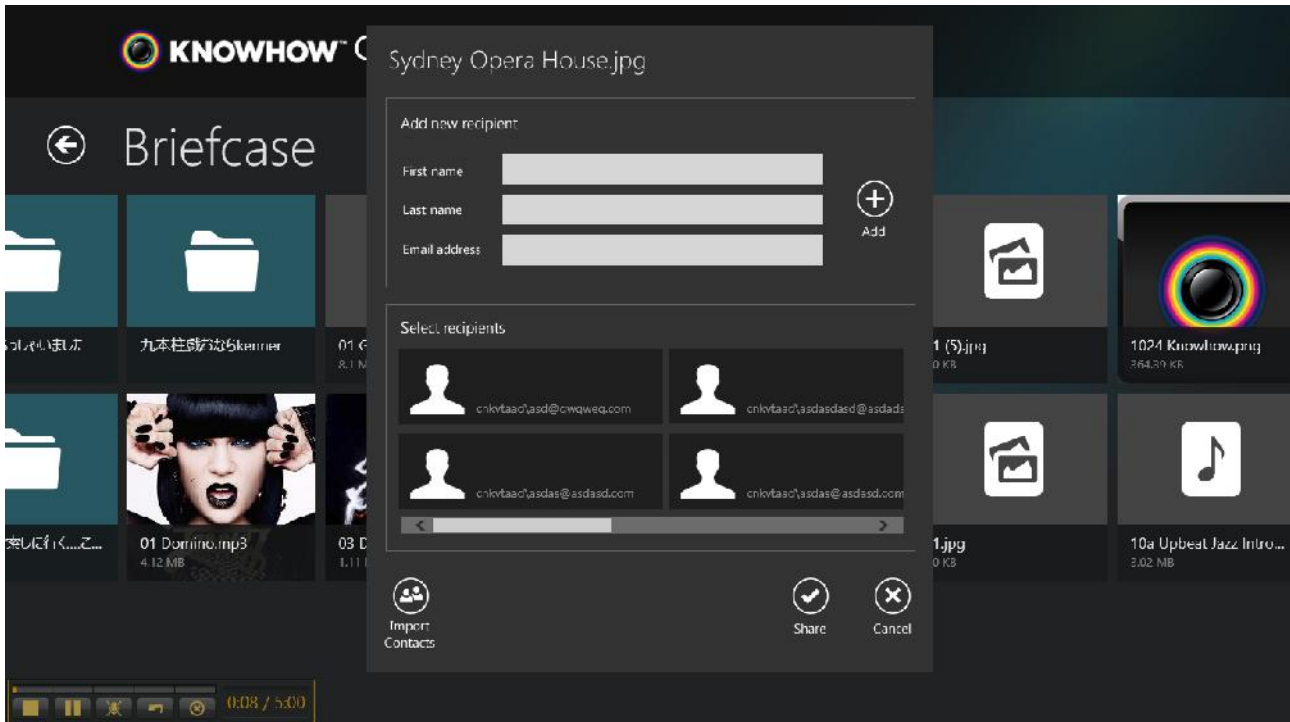
Selecting Briefcase from the main menu will open the file browser.



Options in the App Bar (swipe up from the bottom of the screen) allow the user to download files and previous versions, view a slideshow, or add to playlist. In addition you can create folders, move or upload multiple files or share items.

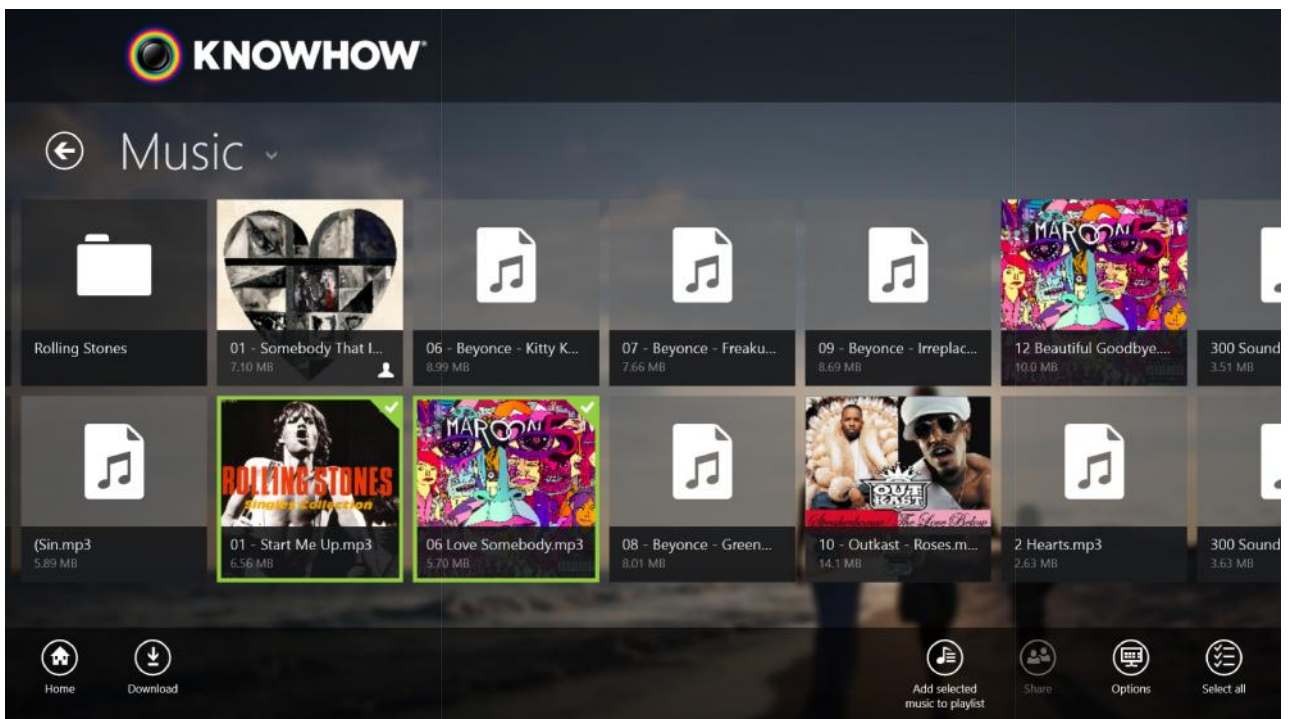
1.2.3 SHARE FILE

Selecting share from the App Bar when a file is selected brings up the sharing dialogue.



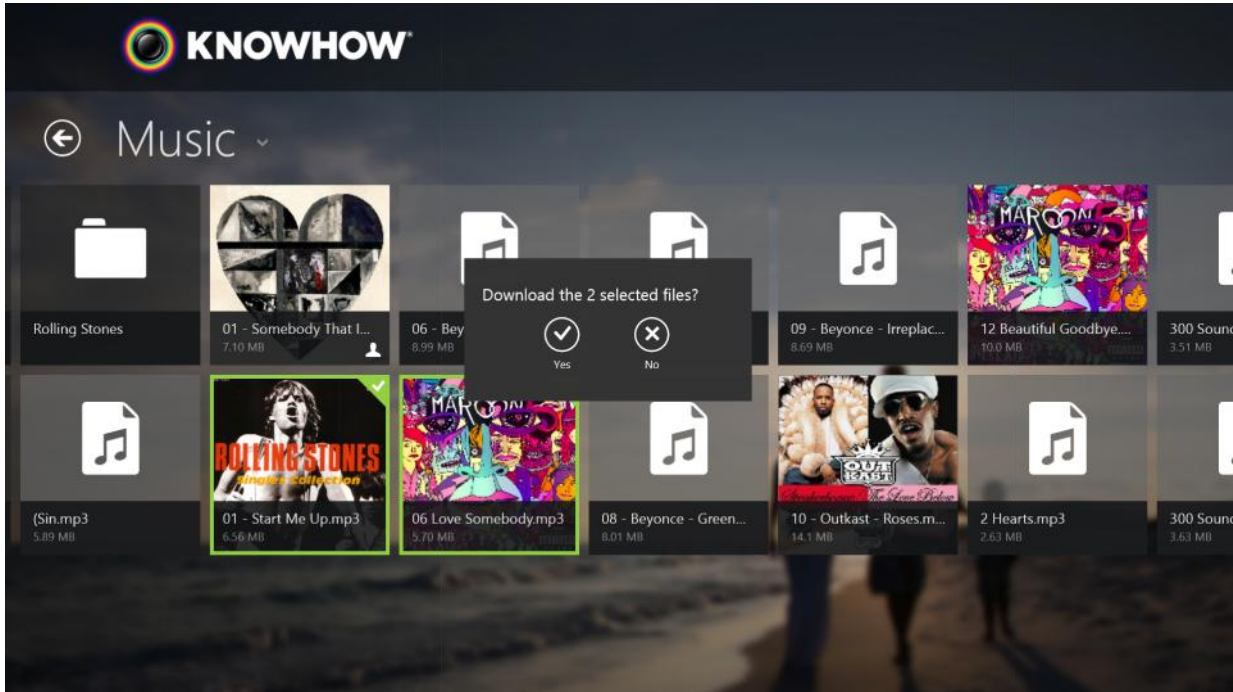
1.2.4 ADD TO PLAYLIST

If one or more files are selected, the “add to playlist” function will present a playlist picker to select any existing playlists or use the default.



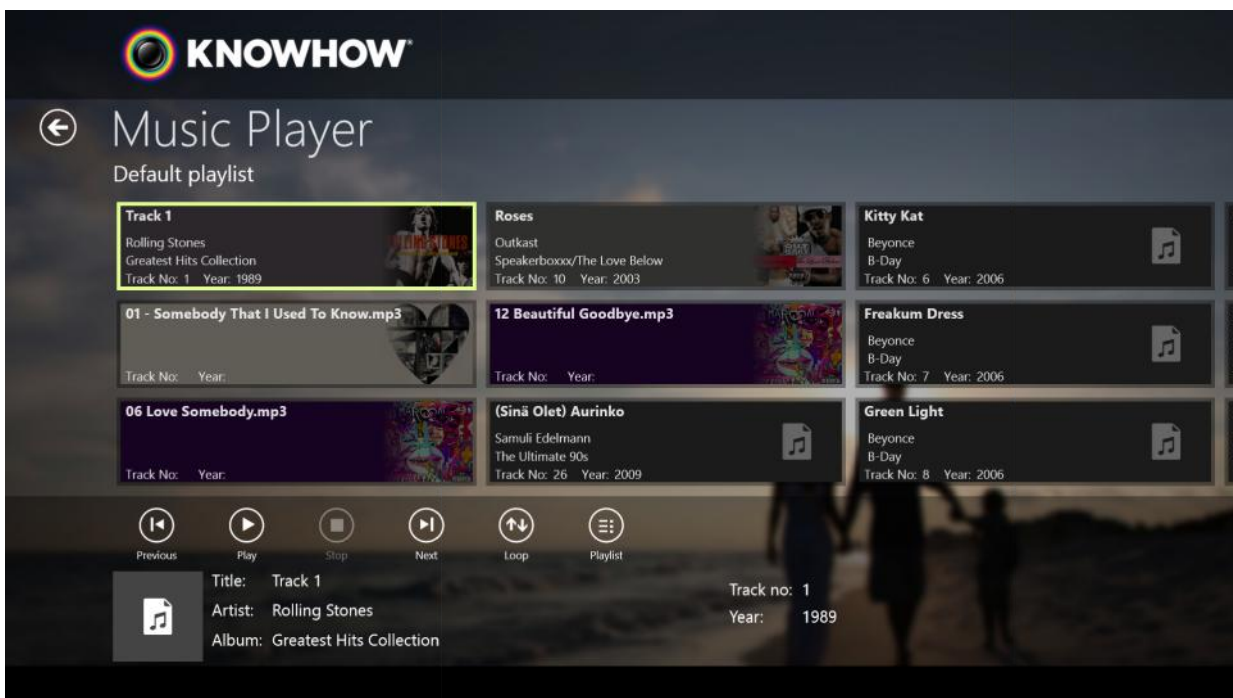
1.2.5 DOWNLOAD

Selecting one or more files for download causes a Windows 'save file' dialogue to be shown. If name collisions occur the newly downloaded file is appended with a version number using the windows default setting.



1.2.6 MUSIC PLAYER

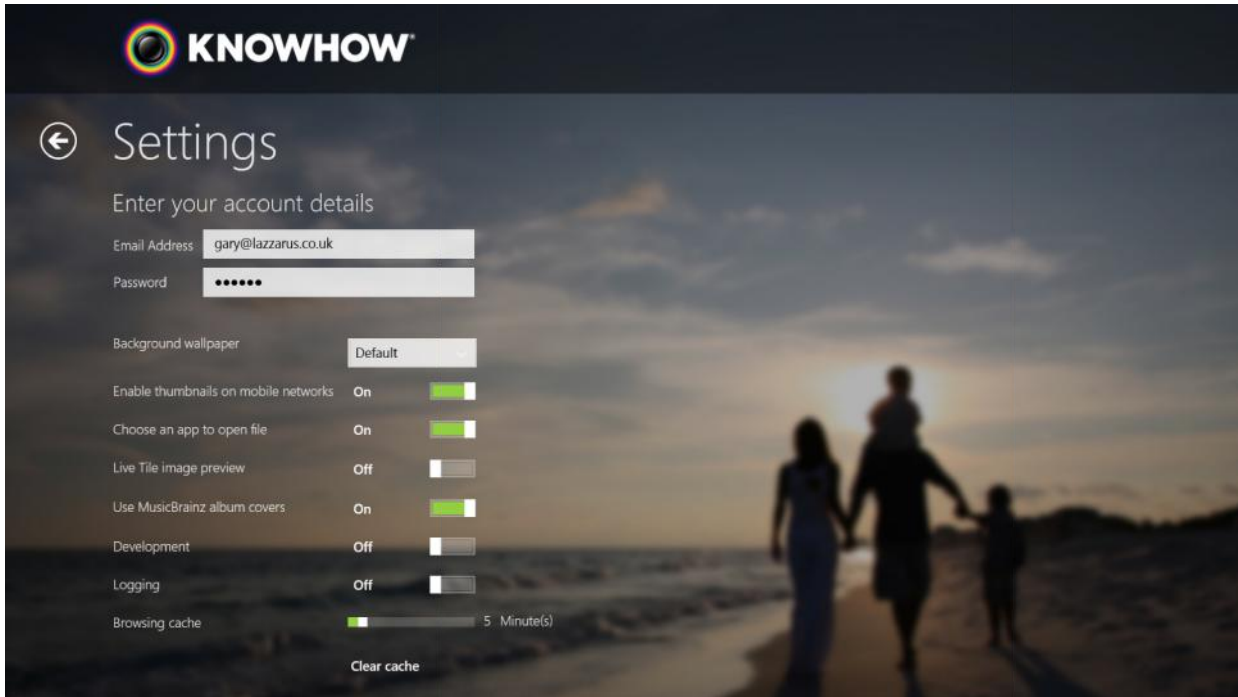
Music files can be played through the inbuilt music player from any Briefcase or Backup folder.



Playlists list track information and album art. Multiple playlists can be created through the app.

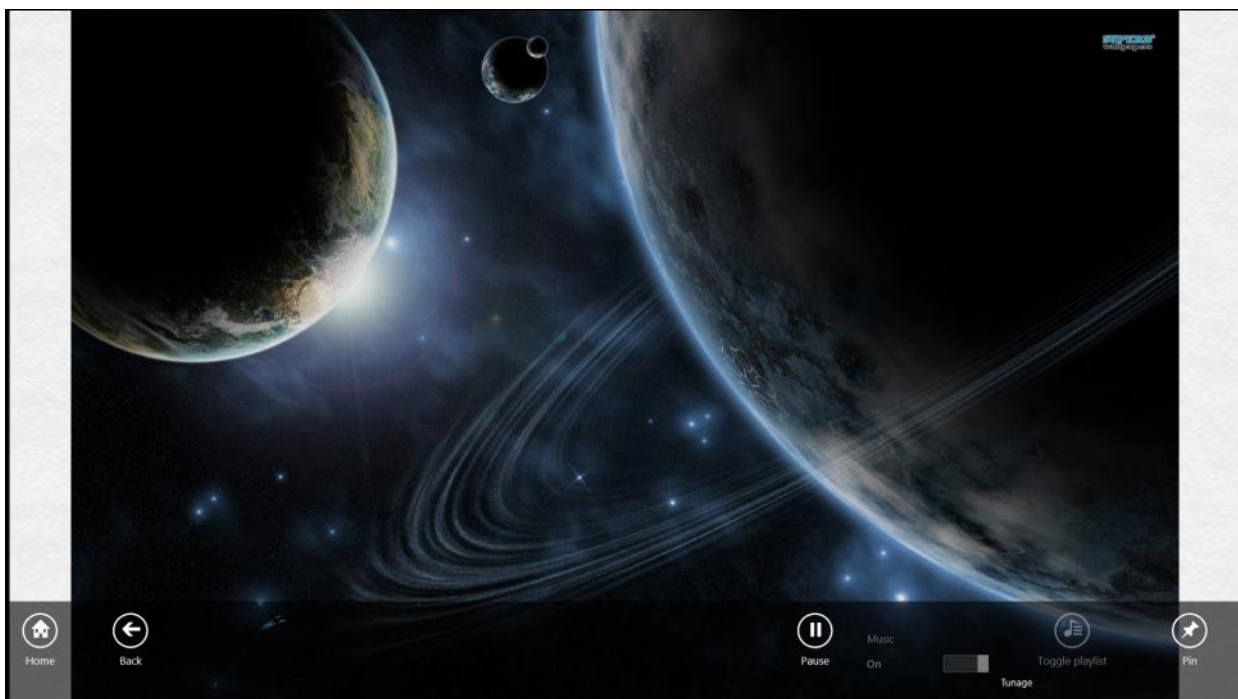
1.2.7 SETTINGS

The settings tab enables users to switch accounts and turn features on and off such as live tiles, usage over mobile networks, and the option to choose which app opens particular file types.



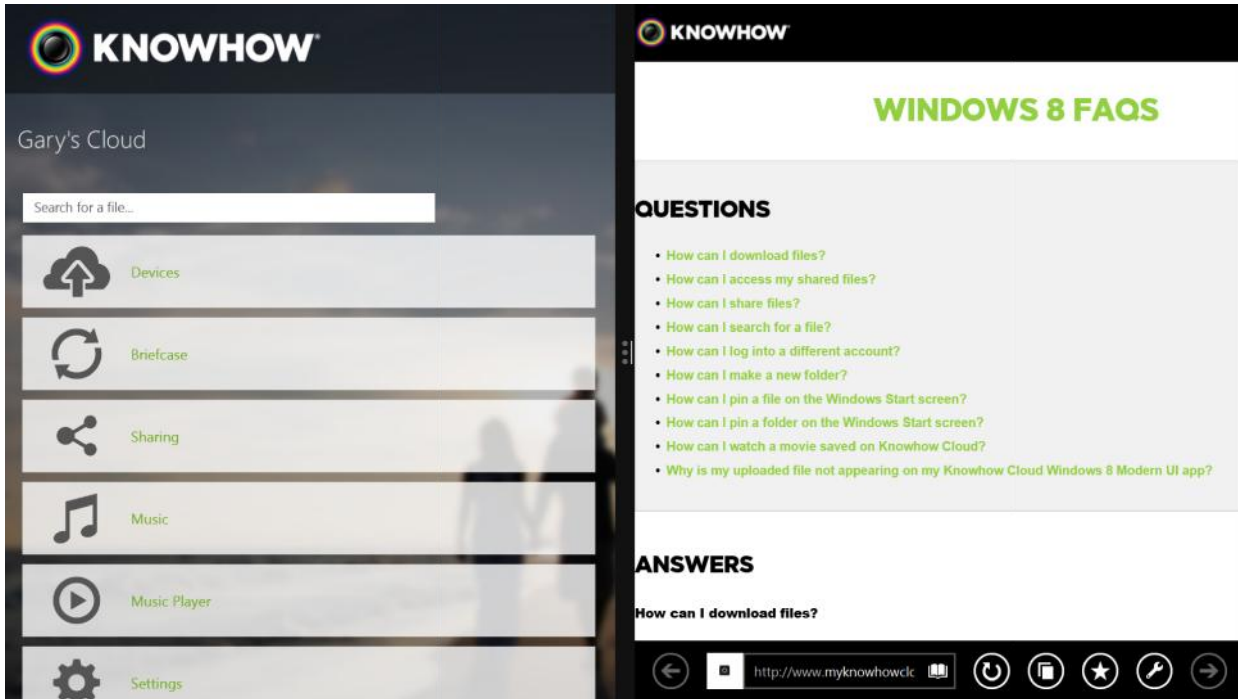
1.2.8 SLIDE SHOW

Clicking on the slideshow button in any Briefcase or Backup folder brings up a full screen slideshow view.



1.2.9 HELP

Clicking on the help button on the main menu will open a web browser view on the right hand side of the screen. This will display the help files for the Windows 8 app which are stored on myknowhowcloud.com

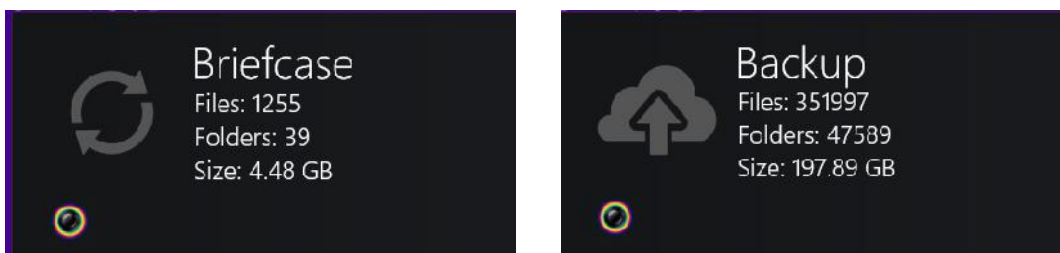


1.3 LIVE TILES

The Knowhow Cloud tile now supports “live tile mode”. This means that when the user is on the Start Screen the app tile will dynamically display the amount of files in the user’s Backup and Briefcase and the total amount of space used.



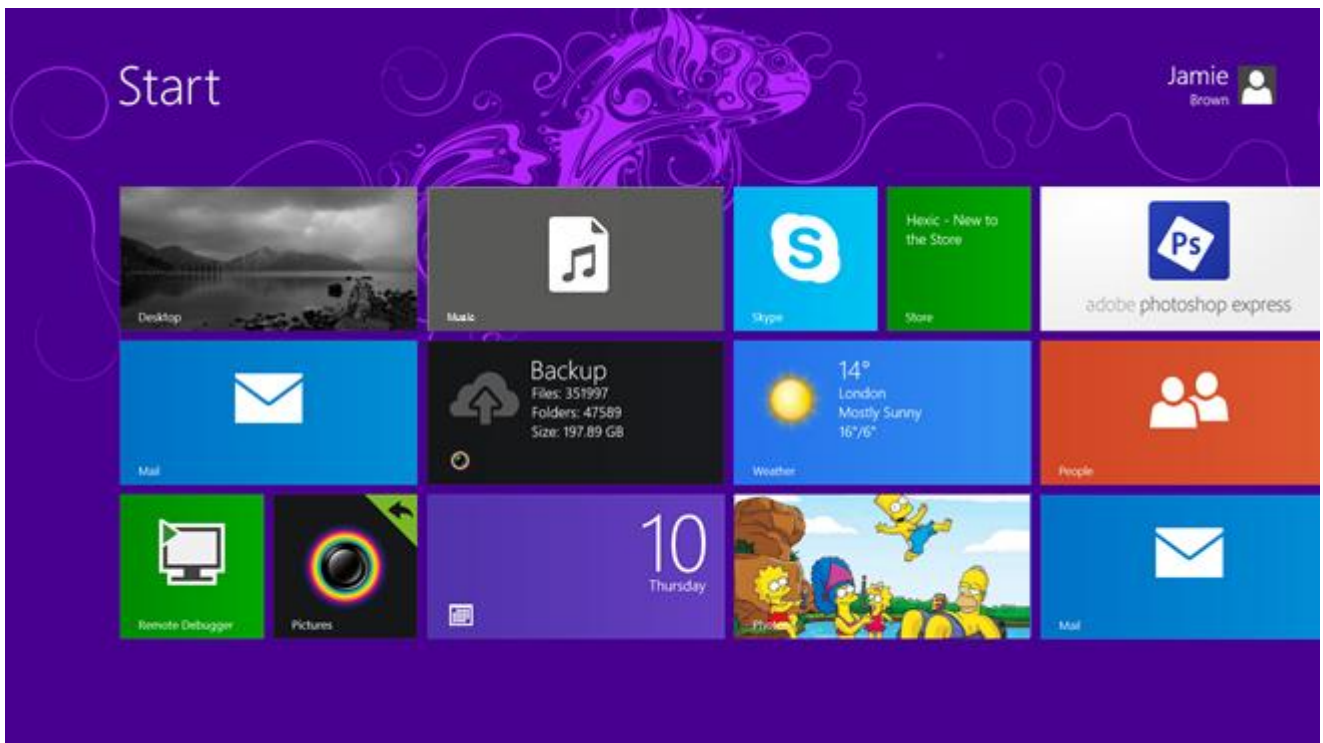
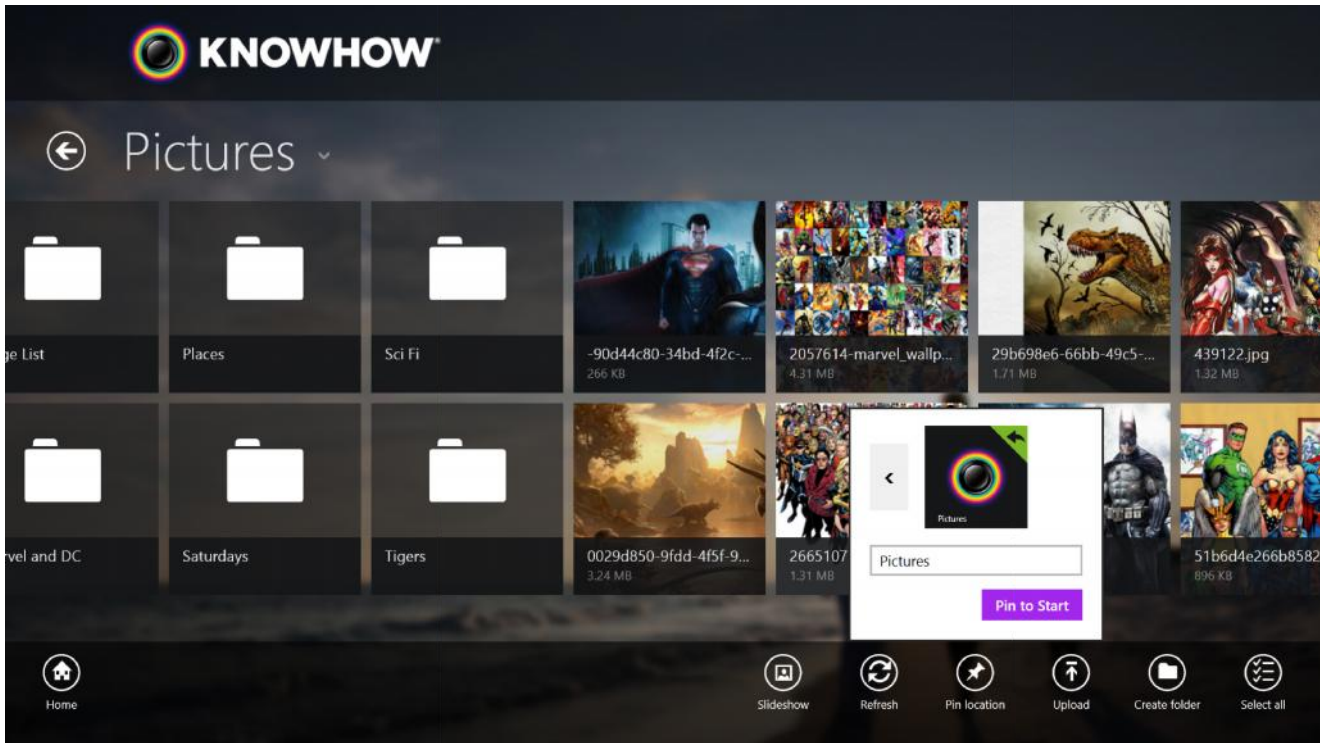
If the tile is shrunken to the smaller rectangle size the tile only shows one piece of data at once. It will then refresh every few seconds with the other piece of data.



If music is playing from the playlist, the live tile will show track information and album art if available. Also, the tile will display the progress of any pending uploads or downloads.

1.4 BOOKMARK TILES

Folders in the Briefcase or Backup section of the app can be bookmarked. This will create a new tile shortcut on the user's main menu which takes them straight to the folder.



1.5 CHARMS

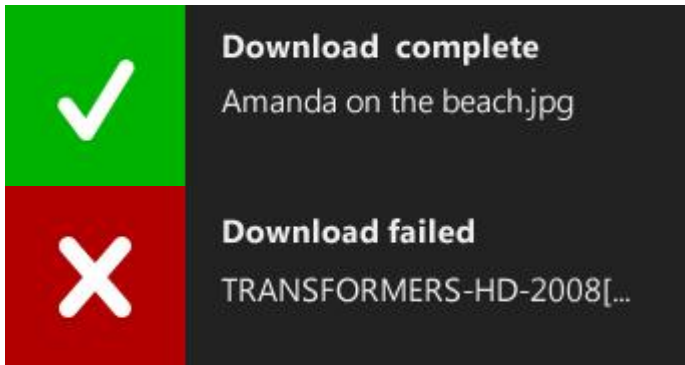
A file in the Briefcase or the Backup can be sent to another Windows 8 app through the Share charm function. This will enable the file to be viewed, edited, or sent to another user.



The Settings charm also gives quick access to Account Settings, Help, Privacy Policy and Permissions:

1.6 TOAST NOTIFICATIONS

Toast notifications occur while uploading and downloading. They will pop-up regardless of which app is currently in the foreground. Examples include:



It is possible to take action when the toast is visible by swiping left on the notification, as follows:

Event	Swipe Left	Notes
Download complete	Prompts the user to select which software will open the file.	
Upload complete	Open directory where the uploaded file was stored.	
Download failed	Re-initialise the download.	Not visible if the user cancelled the download themselves.
Upload failed	Re-initialise the upload.	Not visible if the user cancelled the upload themselves.

1.7 NAVIGATION & VIEWS

All screens are fully functional using a touch interface as well as mouse input.

Depending on the screen size and orientation of the device, as well as the current operation, the various screens can appear in a snapped style which favours vertical scrolling, as in the following example:

